



Noise Monitoring Result

Day Time (0700 - 1900hrs on normal weekdays)

Location: M1a - Harbour Road Sports Centre

Date	Time	Weather	Measurement Noise Level			Baseline Level	Construction Noise Level	Limit Level
			Leq	L10	L90	Leq	Leq	Leq
Unit: dB(A), (30-min)								
28/05/13	10:15	Fine	73.2	76.0	67.0	72	66	75
03/06/13	10:00	Fine	73.8	76.5	67.5	72	69	75
14/06/13	10:40	Cloudy	72.6	75.5	67.5	72	62	75
19/06/13	10:30	Fine	72.3	75.5	67.0	72	56	75
25/06/13	10:20	Cloudy	72.0	74.5	65.5	72	72	75

* Due to adverse weather condition, the noise monitoring was rescheduled from 11 June 2013 to 14 June 2013

Location: M2b - Noon-day gun area

Date	Time	Weather	Measurement Noise Level			Baseline Level	Construction Noise Level	Limit Level
			Leq	L10	L90	Leq	Leq	Leq
Unit: dB(A), (30-min)								
28/05/13	11:00	Fine	67.7	69.8	65.4	68	51	75
03/06/13	10:45	Fine	72.3	74.0	69.5	68	71	75
14/06/13	8:22	Cloudy	71.3	73.0	69.5	68	69	75
19/06/13	11:15	Fine	69.5	70.5	68.0	68	65	75
25/06/13	11:15	Cloudy	70.5	71.5	68.5	68	67	75

* Due to adverse weather condition, the noise monitoring was rescheduled from 11 June 2013 to 14 June 2013

Location: M3a - Tung Lo Wan Fire Station

Date	Time	Weather	Measurement Noise Level			Baseline Level	Construction Noise Level	Limit Level
			Leq	L10	L90	Leq	Leq	Leq
Unit: dB(A), (30-min)								
28/05/13	13:00	Fine	66.6	68.0	64.0	69	67	75
03/06/13	11:30	Fine	66.9	68.5	64.5	69	67	75
13/06/13	11:05	Cloudy	67.6	69.5	65.0	69	68	75
19/06/13	13:00	Fine	67.0	68.5	65.0	69	67	75
25/06/13	13:00	Cloudy	67.4	69.5	65.0	69	67	75

* Due to adverse weather condition, the noise monitoring was rescheduled from 11 June 2013 to 13 June 2013

Location: M4b - Victoria Centre

Date	Time	Weather	Measurement Noise Level			Baseline Noise Level	Construction Noise Level	Limit Level
			Leq	L10	L90	Leq	Leq	Leq
Unit: dB(A), (30min)								
28/05/13	13:35	Fine	75.6	77.0	70.0	67	75	75
03/06/13	13:00	Fine	70.5	72.5	68.5	67	68	75
13/06/13	10:20	Cloudy	73.4	75.5	69.0	67	72	75
19/06/13	13:40	Fine	70.9	73.0	68.0	67	68	75
25/06/13	1:50	Cloudy	70.3	71.0	69.0	67	67	75

* Due to adverse weather condition, the noise monitoring was rescheduled from 11 June 2013 to 13 June 2013

Location: M5b - City Garden

Date	Time	Weather	Measurement Noise Level			Baseline Level	Construction Noise Level	Limit Level
			Leq	L10	L90	Leq	Leq	Leq
Unit: dB(A), (30min)								
28/05/13	14:15	Fine	71.1	72.5	68.5	68	68	75
03/06/13	13:45	Fine	73.2	74.5	70.5	68	72	75
13/06/13	9:25	Cloudy	71.3	72.5	68.0	68	69	75
19/06/13	14:30	Fine	70.7	71.0	68.5	68	67	75
25/06/13	14:35	Cloudy	70.4	71.5	68.5	68	67	75

* Due to adverse weather condition, the noise monitoring was rescheduled from 11 June 2013 to 13 June 2013



Noise Monitoring Result

Day Time (0700 - 1900hrs on normal weekdays)

Location: M6 - HK Baptist Church Henrietta Secondary School

Date	Time	Weather	Measurement Noise Level			Baseline Level	Construction Noise Level	Limit Level
			Leq	L10	L90	Leq	Leq	Leq
Unit: dB(A), (30-min)								
28/05/13	14:55	Fine	73.5	75.0	71.5	71	70	70
03/06/13	14:25	Fine	74.3	75.5	72.5	71	72	65
13/06/13	8:05	Cloudy	72.2	73.5	70.0	71	67	65
19/06/13	15:10	Fine	73.0	74.0	71.0	71	69	70
25/06/13	15:25	Cloudy	73.4	74.5	72.0	71	70	70

* Due to adverse weather condition, the noise monitoring was rescheduled from 11 June 2013 to 13 June 2013

Location: M7e - International Finance Centre (Eastern End of Podium) (Reference Station)

Date	Time	Weather	Measurement Noise Level			Baseline Level	Construction Noise Level	Limit Level
			Leq	L10	L90	Leq	Leq	Leq
Unit: dB(A), (30-min)								
28/05/13	8:40	Fine	74.8	76.0	72.0	67	74	N/A
03/06/13	9:20	Fine	72.0	74.5	69.5	67	70	N/A
11/06/13	8:10	Cloudy	70.9	72.0	68.5	67	69	N/A
19/06/13	8:05	Fine	69.7	71.0	67.0	67	67	N/A
25/06/13	8:00	Cloudy	67.4	68.5	65.0	67	59	N/A

Location: M7w - International Finance Centre (Western End of Podium)

Date	Time	Weather	Measurement Noise Level			Baseline Level	Construction Noise Level	Limit Level
			Leq	L10	L90	Leq	Leq	Leq
Unit: dB(A), (30-min)								
28/05/13	8:00	Fine	72.6	77.5	64.0	69	70	75
03/06/13	8:45	Fine	71.1	75.0	65.5	69	66	75
11/06/13	8:45	Cloudy	67.7	69.0	66.0	69	68	75
19/06/13	8:35	Fine	67.8	69.0	66.0	69	68	75
25/06/13	8:40	Cloudy	65.9	67.0	63.5	69	66	75

Location: M8 - City Hall

Date	Time	Weather	Measurement Noise Level			Baseline Level	Construction Noise Level	Limit Level
			Leq	L10	L90	Leq	Leq	Leq
Unit: dB(A), (30-min)								
28/05/13	9:20	Fine	59.4	61.0	56.0	64	59	70
03/06/13	8:00	Fine	60.1	62.5	56.5	64	60	70
11/06/13	10:10	Cloudy	69.0	72.0	67.5	64	67	70
19/06/13	9:40	Fine	63.7	66.5	58.0	64	64	70
25/06/13	9:35	Cloudy	60.5	62.0	58.0	64	61	70



Noise Monitoring Result

Day Time (0700 - 1900hrs on normal weekdays)

Location: M1a - Harbour Road Sports Centre

Date	Time	Weather	Measurement Noise Level			Baseline Level	Construction Noise Level	Limit Level
			Leq	L10	L90	Leq	Leq	Leq
Unit: dB(A), (30-min)								
03/07/13	9:10	Fine	74.0	76.5	69.0	72	69	75
09/07/13	9:00	Fine	73.9	76.5	68.5	72	69	75
17/07/13	10:10	Fine	72.7	75.5	67.0	72	63	75
23/07/13	11:10	Fine	72.4	75.4	67.0	72	59	75

Location: M2b - Noon-day gun area

Date	Time	Weather	Measurement Noise Level			Baseline Level	Construction Noise Level	Limit Level
			Leq	L10	L90	Leq	Leq	Leq
Unit: dB(A), (30-min)								
03/07/13	10:00	Fine	71.4	72.5	69.5	68	69	75
09/07/13	9:50	Fine	70.2	71.0	68.5	68	67	75
17/07/13	11:00	Fine	71.6	72.5	68.5	68	69	75
23/07/13	13:00	Cloudy	75.1	76.5	72.5	68	74	75

Location: M3a - Tung Lo Wan Fire Station

Date	Time	Weather	Measurement Noise Level			Baseline Level	Construction Noise Level	Limit Level
			Leq	L10	L90	Leq	Leq	Leq
Unit: dB(A), (30-min)								
03/07/13	10:45	Fine	69.7	76.0	66.0	69	62	75
09/07/13	10:30	Fine	66.3	68.0	64.0	69	66	75
17/07/13	13:00	Fine	66.9	67.5	63.5	69	67	75
23/07/13	13:50	Cloudy	66.2	68.0	63.5	69	66	75

Location: M4b - Victoria Centre

Date	Time	Weather	Measurement Noise Level			Baseline Noise Level	Construction Noise Level	Limit Level
			Leq	L10	L90	Leq	Leq	Leq
Unit: dB(A), (30min)								
03/07/13	11:25	Fine	70.0	71.5	68.5	67	67	75
09/07/13	11:15	Fine	70.9	72.0	68.5	67	68	75
17/07/13	13:45	Fine	70.8	71.5	69.0	67	68	75
23/07/13	14:45	Fine	70.7	72.0	69.0	67	68	75

Location: M5b - City Garden

Date	Time	Weather	Measurement Noise Level			Baseline Level	Construction Noise Level	Limit Level
			Leq	L10	L90	Leq	Leq	Leq
Unit: dB(A), (30min)								
03/07/13	13:10	Fine	70.7	71.5	69.0	68	67	75
09/07/13	13:00	Fine	69.9	71.0	68.0	68	65	75
17/07/13	14:30	Cloudy	72.3	72.0	68.5	68	70	75
23/07/13	15:35	Cloudy	71.9	72.5	70.5	68	70	75

Location: M6 - HK Baptist Church Henrietta Secondary School

Date	Time	Weather	Measurement Noise Level			Baseline Level	Construction Noise Level	Limit Level
			Leq	L10	L90	Leq	Leq	Leq
Unit: dB(A), (30-min)								
03/07/13	13:55	Fine	73.0	74.0	71.0	71	69	70
09/07/13	13:45	Fine	74.9	76.0	72.5	71	73	70
16/07/13	15:50	Cloudy	74.4	75.0	72.5	71	72	70
23/07/13	14:20	Cloudy	73.5	75.0	72.0	71	70	70



Noise Monitoring Result

Day Time (0700 - 1900hrs on normal weekdays)

Location: M7e - International Finance Centre (Eastern End of Podium) (Reference Station)

Date	Time	Weather	Measurement Noise Level			Baseline Level	Construction Noise Level	Limit Level
			Leq	L10	L90	Leq	Leq	Leq
Unit: dB(A), (30-min)								
02/07/13	14:34	Fine	73.1	74.5	70.5	67	72	N/A
08/07/13	13:58	Fine	75.0	77.0	69.0	67	74	N/A
16/07/13	9:15	Fine	74.0	74.5	72.5	67	73	N/A
23/07/13	8:45	Fine	71.6	73.0	69.5	67	70	N/A

Location: M7w - International Finance Centre (Western End of Podium)

Date	Time	Weather	Measurement Noise Level			Baseline Level	Construction Noise Level	Limit Level
			Leq	L10	L90	Leq	Leq	Leq
Unit: dB(A), (30-min)								
02/07/13	13:58	Fine	66.5	67.5	64.0	69	67	75
08/07/13	14:38	Fine	65.6	67.0	63.0	69	66	75
16/07/13	9:47	Cloudy	66.8	68.0	65.5	69	67	75
23/07/13	9:30	Fine	67.2	68.5	65.5	69	67	75

Location: M8 - City Hall

Date	Time	Weather	Measurement Noise Level			Baseline Level	Construction Noise Level	Limit Level
			Leq	L10	L90	Leq	Leq	Leq
Unit: dB(A), (30-min)								
02/07/13	15:29	Fine	59.4	62.0	56.0	64	59	70
08/07/13	15:28	Fine	60.4	62.0	57.0	64	60	70
16/07/13	11:00	Cloudy	62.8	65.0	57.5	64	63	70
23/07/13	10:15	Fine	60.3	63.0	57.0	64	60	70



Noise Monitoring Result

Day Time (0700 - 1900hrs on normal weekdays)

Location: M1a - Harbour Road Sports Centre

Date	Time	Weather	Measurement Noise Level			Baseline Level	Construction Noise Level	Limit Level
			Leq	L10	L90	Leq	Leq	Leq
Unit: dB(A), (30-min)								
29/07/13	17:30	Fine	72.9	75.0	69.0	72	65	75
05/08/13	16:45	Fine	74.3	76.5	70.5	72	70	75
13/08/13	16:57	Cloudy	73.9	75.5	69.5	72	69	75
20/08/13	17:15	Cloudy	74.6	76.5	71.0	72	71	75
27/08/13	15:45	Fine	71.5	73.5	68.0	72	72	75

Location: M2b - Noon-day gun area

Date	Time	Weather	Measurement Noise Level			Baseline Level	Construction Noise Level	Limit Level
			Leq	L10	L90	Leq	Leq	Leq
Unit: dB(A), (30-min)								
30/07/13	10:00	Fine	68.9	70.0	67.0	68	63	75
06/08/13	10:00	Fine	69.7	70.5	68.0	68	66	75
15/08/13	13:00	Cloudy	69.9	71.0	68.0	68	66	75
21/08/13	16:10	Cloudy	71.0	72.5	67.5	68	68	75
27/08/13	15:00	Fine	70.5	71.3	67.0	68	67	75

*Due to adverse weather condition, noise monitoring was rescheduled from 13 Aug 2013 to 15 Aug 2013

Location: M3a - Tung Lo Wan Fire Station

Date	Time	Weather	Measurement Noise Level			Baseline Level	Construction Noise Level	Limit Level
			Leq	L10	L90	Leq	Leq	Leq
Unit: dB(A), (30-min)								
30/07/13	10:45	Fine	69.5	70.5	67.0	69	61	75
06/08/13	10:45	Fine	67.3	68.5	65.4	69	67	75
15/08/13	11:15	Cloudy	67.0	68.5	65.0	69	67	75
20/08/13	16:15	Cloudy	66.8	68.0	64.5	69	67	75
27/08/13	13:10	Fine	67.0	69.0	64.0	69	67	75

*Due to adverse weather condition, noise monitoring was rescheduled from 13 Aug 2013 to 15 Aug 2013

Location: M4b - Victoria Centre

Date	Time	Weather	Measurement Noise Level			Baseline Noise Level	Construction Noise Level	Limit Level
			Leq	L10	L90	Leq	Leq	Leq
Unit: dB(A), (30min)								
30/07/13	13:00	Fine	68.3	69.0	66.5	67	61	75
06/08/13	11:36	Fine	69.5	70.8	67.5	67	65	75
15/08/13	10:30	Cloudy	69.8	71.0	68.0	67	66	75
20/08/13	15:30	Cloudy	69.4	70.5	67.5	67	65	75
27/08/13	14:10	Fine	68.6	70.0	67.0	67	63	75

*Due to adverse weather condition, noise monitoring was rescheduled from 13 Aug 2013 to 15 Aug 2013

Location: M5b - City Garden

Date	Time	Weather	Measurement Noise Level			Baseline Level	Construction Noise Level	Limit Level
			Leq	L10	L90	Leq	Leq	Leq
Unit: dB(A), (30min)								
30/07/13	14:20	Fine	74.0	75.6	67.5	68	73	75
06/08/13	13:05	Fine	73.7	76.5	69.0	68	72	75
15/08/13	9:40	Cloudy	72.4	73.5	70.5	68	70	75
20/08/13	14:40	Cloudy	72.0	72.0	70.5	68	70	75
27/08/13	11:20	Fine	69.8	70.5	68.0	68	65	75

*Due to adverse weather condition, noise monitoring was rescheduled from 13 Aug 2013 to 15 Aug 2013

Location: M6 - HK Baptist Church Henrietta Secondary School

Date	Time	Weather	Measurement Noise Level			Baseline Level	Construction Noise Level	Limit Level
			Leq	L10	L90	Leq	Leq	Leq
Unit: dB(A), (30-min)								
30/07/13	15:00	Fine	71.8	73.0	69.5	71	65	70
06/08/13	13:50	Fine	74.8	76.0	72.5	71	73	70
15/08/13	9:00	Cloudy	72.1	73.0	70.0	71	67	70
20/08/13	13:30	Cloudy	74.7	75.5	73.0	71	72	70
27/08/13	10:05	Fine	74.2	75.0	72.5	71	72	70

*Due to adverse weather condition, noise monitoring was rescheduled from 13 Aug 2013 to 15 Aug 2013



Noise Monitoring Result

Day Time (0700 - 1900hrs on normal weekdays)

Location: M7e - International Finance Centre (Eastern End of Podium) (Reference Station)

Date	Time	Weather	Measurement Noise Level			Baseline Level	Construction Noise Level	Limit Level
			Leq	L10	L90	Leq	Leq	Leq
Unit: dB(A), (30-min)								
29/07/13	10:33	Fine	71.6	72.5	69.5	67	70	N/A
05/08/13	14:26	Fine	74.7	77.5	71.5	67	74	N/A
15/08/13	15:25	Cloudy	72.4	75.5	69.0	67	71	N/A
21/08/13	14:30	Cloudy	74.8	77.0	71.0	67	74	N/A
28/08/13	10:05	Fine	73.1	74.0	71.5	67	72	N/A

*Due to adverse weather condition, noise monitoring was rescheduled from 13 Aug 2013 to 15 Aug 2013

Location: M7w - International Finance Centre (Western End of Podium)

Date	Time	Weather	Measurement Noise Level			Baseline Level	Construction Noise Level	Limit Level
			Leq	L10	L90	Leq	Leq	Leq
Unit: dB(A), (30-min)								
29/07/13	09:56	Fine	67.1	68.5	64.5	69	67	75
05/08/13	15:04	Fine	66.1	67.0	64.0	69	66	75
15/08/13	16:00	Cloudy	69.5	71.0	65.5	69	53	75
21/08/13	15:10	Cloudy	66.3	68.0	64.5	69	66	75
28/08/13	10:40	Fine	67.0	69.0	64.5	69	67	75

*Due to adverse weather condition, noise monitoring was rescheduled from 13 Aug 2013 to 15 Aug 2013

Location: M8 - City Hall

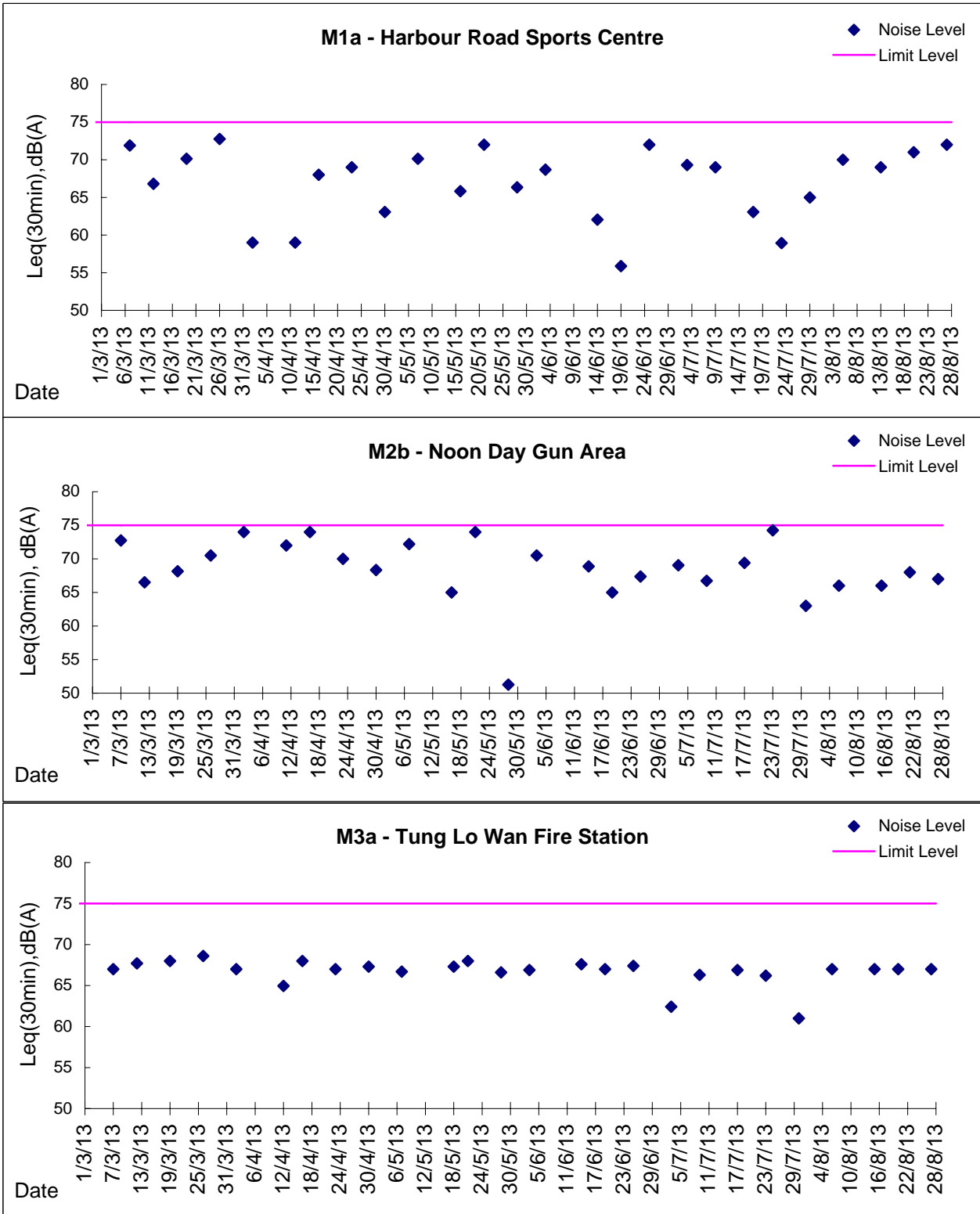
Date	Time	Weather	Measurement Noise Level			Baseline Level	Construction Noise Level	Limit Level
			Leq	L10	L90	Leq	Leq	Leq
Unit: dB(A), (30-min)								
29/07/13	09:02	Fine	61.2	62.5	58.0	64	61	70
05/08/13	15:55	Fine	60.7	62.0	57.0	64	61	70
15/08/13	14:40	Cloudy	62.2	64.0	58.0	64	62	70
21/08/13	13:40	Cloudy	64.3	67.5	61.0	64	53	70
28/08/13	11:20	Fine	59.4	61.0	57.0	64	59	70

*Due to adverse weather condition, noise monitoring was rescheduled from 13 Aug 2013 to 15 Aug 2013



Graphic Presentation of Noise Monitoring Result

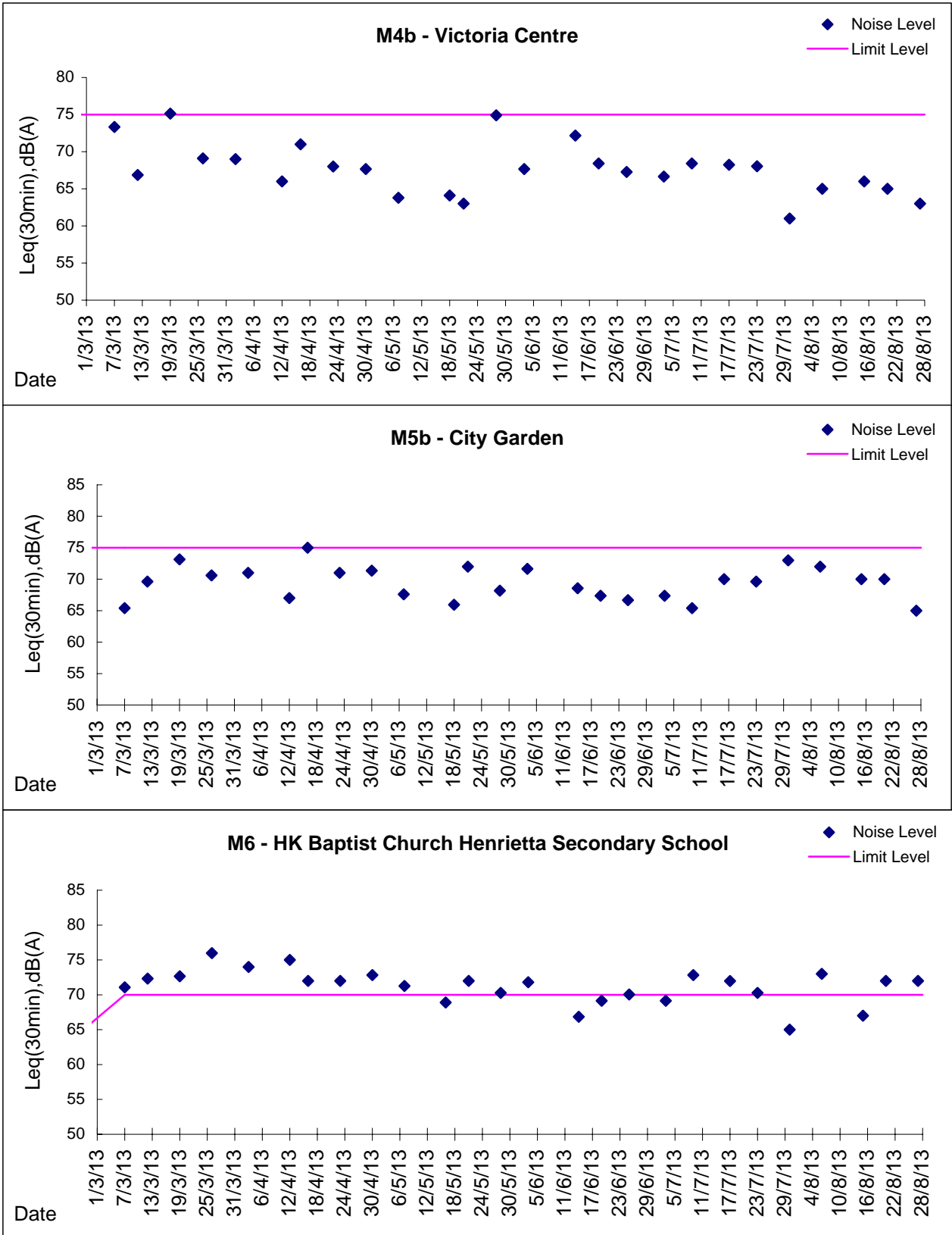
Day Time (0700 - 1900hrs on normal weekdays)





Graphic Presentation of Noise Monitoring Result

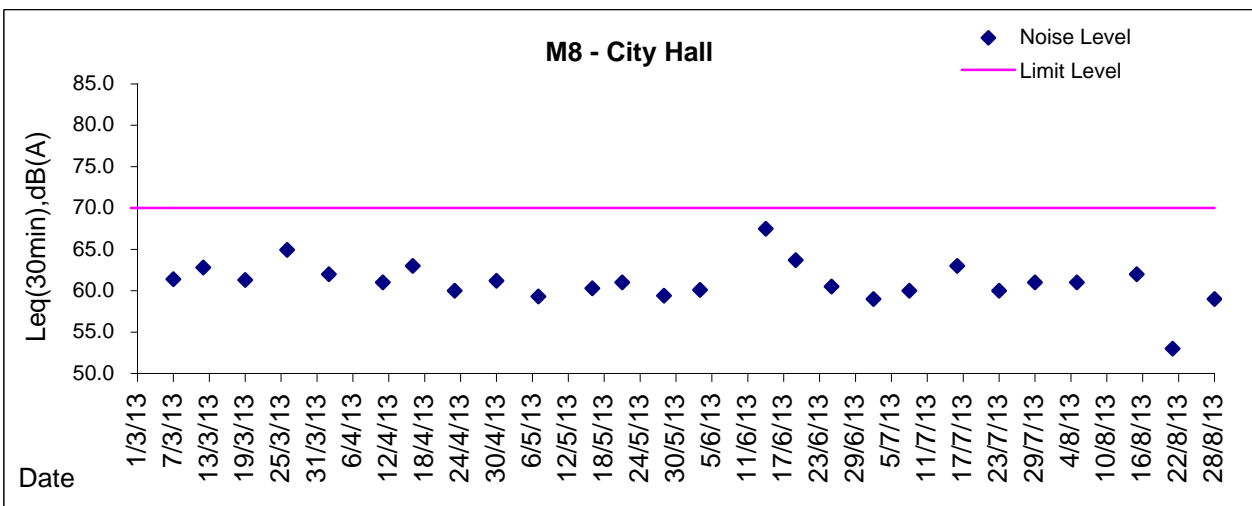
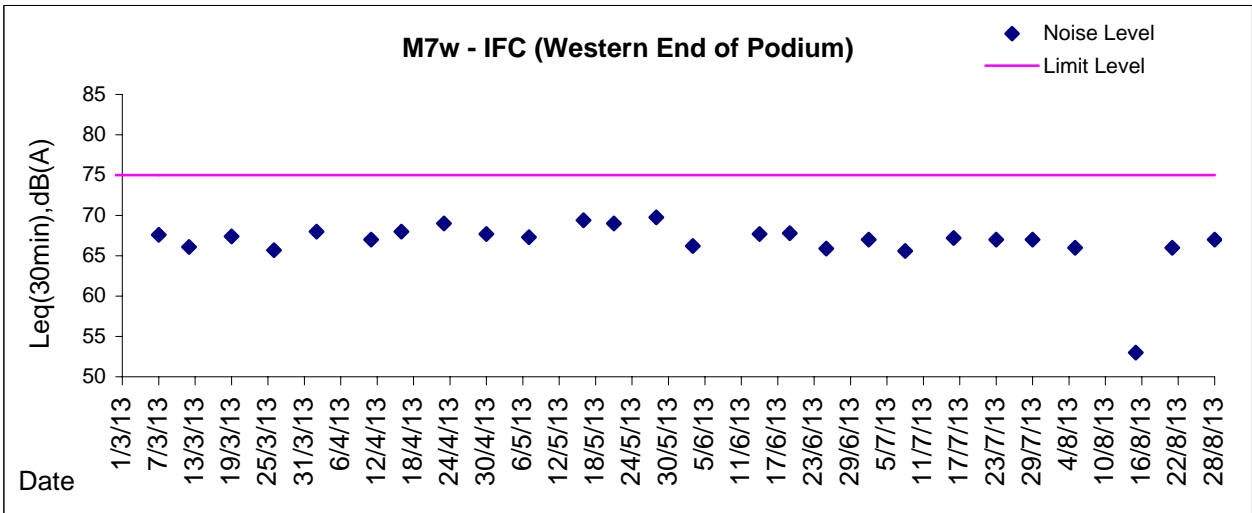
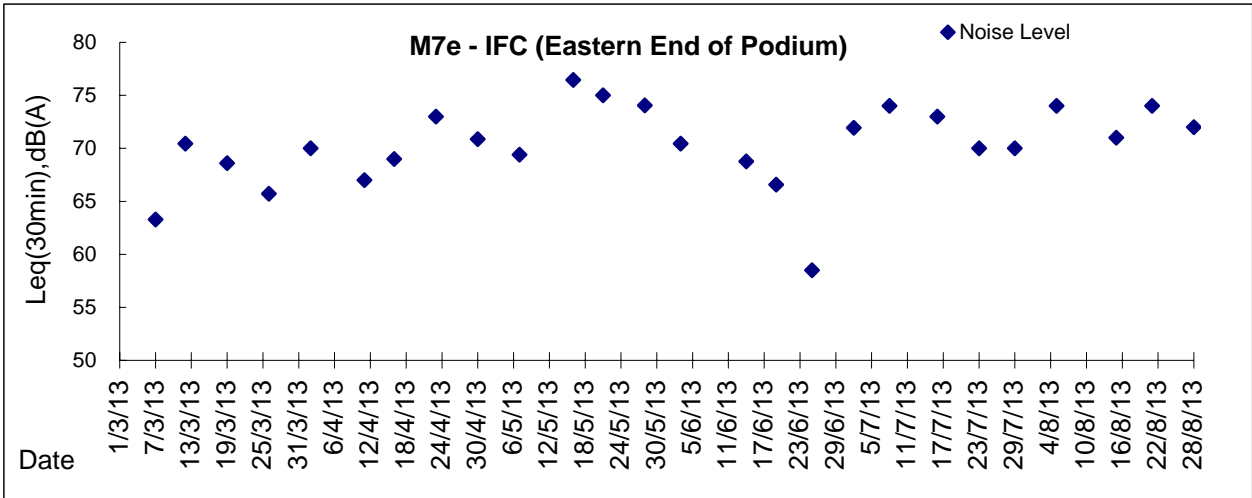
Day Time (0700 - 1900hrs on normal weekdays)





Graphic Presentation of Noise Monitoring Result

Day Time (0700 - 1900hrs on normal weekdays)



* Remark: M7e - IFC (Eastern End of Podium) is a reference monitoring station